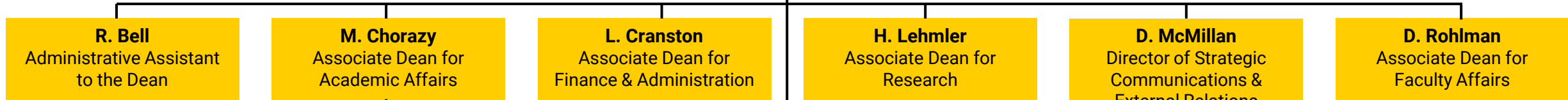


**E. Parker**  
Dean

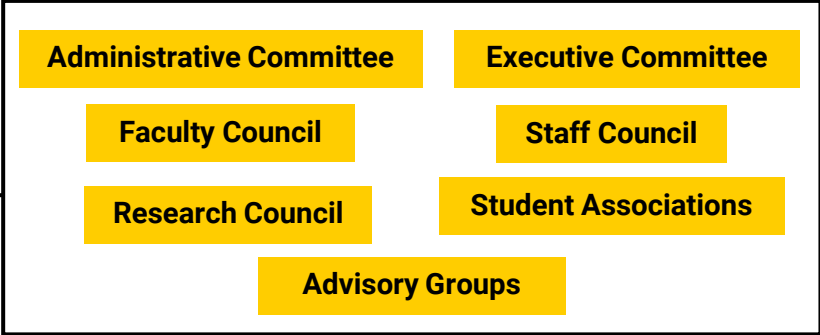


**B. Janssen**, Director,  
Undergraduate Program  
**S. Reisinger**, Assistant Dean  
of Student Services

**Collegiate Institute**

**Institute for Public Health Practice,  
Research and Policy**  
E. Parker, Director

**Collegiate Advisory Units**



**Departments and Centers**

**Biostatistics**  
**J. Cavanaugh, DEO**

- Clinical Trials Statistical and Data Management Center
- Biostatistics Consulting Center

**Community and Behavioral Health**  
**M. Vander Weg, DEO**

- Native Center for Behavioral Health
- Prevention Research Center for Rural Health

**Epidemiology**  
**E. Chrischilles, DEO**

- Center for Emerging and Infectious Diseases
- Health Effectiveness Research Center
- Iowa Registry for Congenital and Inherited Disorders
- Nutrition Center
- Preventive Intervention Center
- State Health Registry of Iowa/Iowa Cancer Registry

**Health Management and Policy**  
**George Wehby, DEO**

- Center for Health Policy and Research
- Rural Policy Research Institute (RUPRI)
  - RUPRI Center for Rural Health Policy Analysis

**Occupational and Environmental Health**  
**N. Fethke, DEO**

- Central Midwest Climate Opportunities & Learning
- Environmental Health Sciences Research Center
- Great Plains Center for Agricultural Health
- Healthier Workforce Center of the Midwest
- Heartland Center for Occupational Health and Safety
- Injury Prevention Research Center
- Iowa's Center for Agricultural Safety and Health